

What's old...

- ... Even in the best of workplaces, injuries/illnesses occur; monitoring can help reduce/prevent these.
- ... OSHA was established in 1970 with a mandate to address private-sector worker safety & health.
- ... In 1980 President Carter's [executive order](#) extended OSHA's purview to federal employees.
- ... The [Office of Federal Agency Programs](#) oversees federal agency safety and health issues.

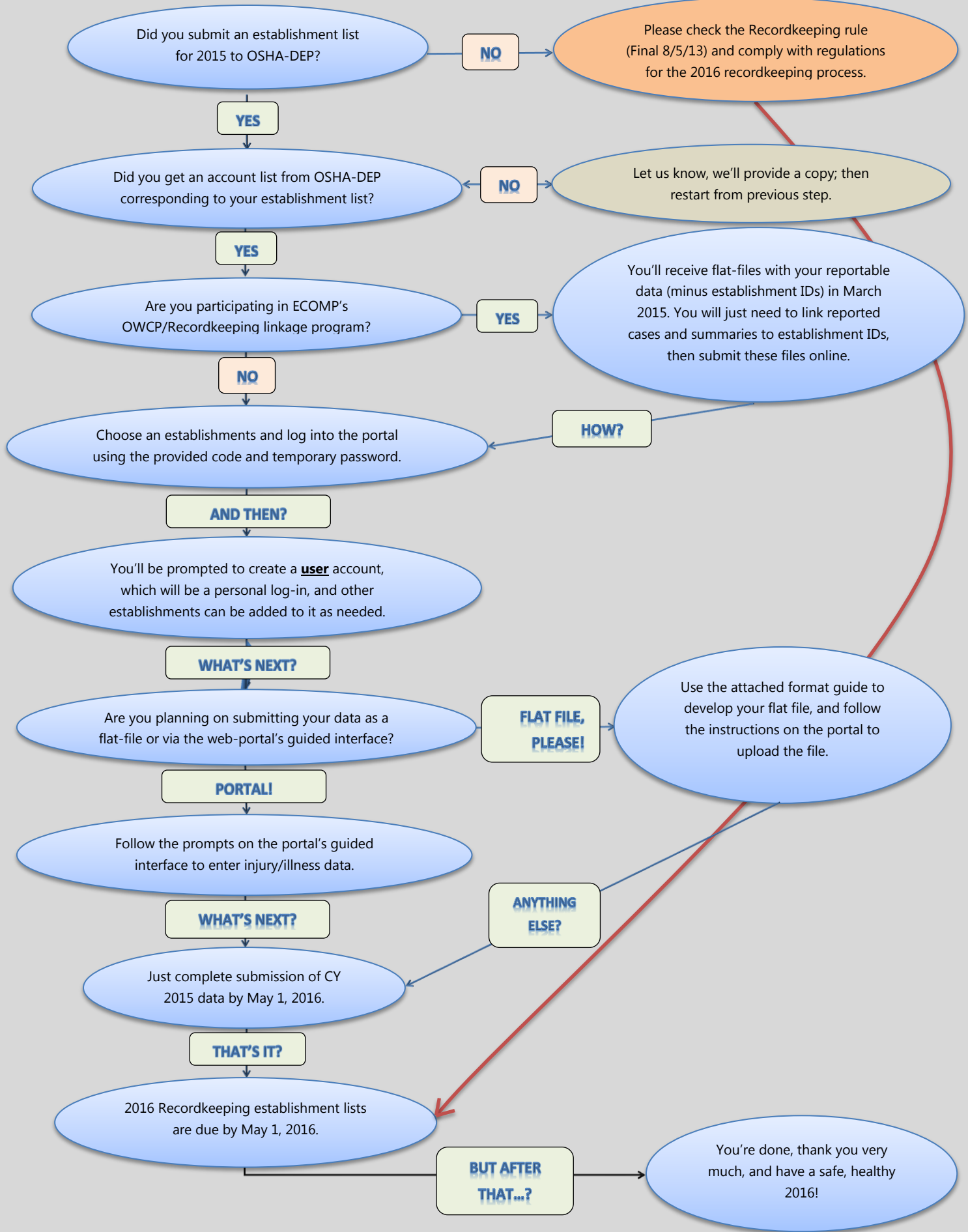
...what's new...

- ... In 2013 a [final order was issued in the Federal Register](#) requiring federal data collection.
- ... This update of federal requirements should be read by all federal agency Safety & Health personnel to capture all the details; the following is just a *summary* of major points:
 - An effective date of January 1, 2014.
 - Use of *calendar year* reporting for the President's Report and OSHA injury/illness data.
 - A more precise definition of the term "establishment" for the purposes of this regulation.
 - Clarification that injuries/illnesses to federally-supervised volunteers/contractors must be recorded.
 - A requirement that federal agencies collect the occupational job series of employees when creating OSHA 300/301 reports, and when reporting annual injury/illness data to OSHA.

...and what's it to you

- ... All federal agency Safety & Health personnel should be aware of and undertake the following:
 - Ensure records of injury/illness through the year capture occupational job series codes.
 - Record injuries/illnesses of all personnel (incl. volunteers and contractors) directly supervised.
 - Report each calendar year's injury/illness data by May 1st of the subsequent year through the [BLS portal](#).
 - Update establishment lists for each year by May 1st of that year (CY 2016 data - May 1, 2016).

OSHA Federal Agency Recordkeeping/Reporting Modernization



OSHA Federal Agency Recordkeeping/Reporting Modernization

	CY 2015 Injury/Illness Data Reporting Timeline	CY 2016 Injury/Illness Data Reporting Timeline	CY 2017 Injury/Illness Data Reporting Timeline
2016			
January	OSHA will email reporting materials, and BLS will activate reporting portal on January 15th .	All agencies with integrated ECOMP/OSHA-reporting functions should submit CY 2016 establishment lists ASAP .	
February	OSHA - Bi-weekly status/process updates		
March	OSHA - Bi-weekly status/process updates		
April	OSHA - Bi-weekly status/process updates		
May	All agencies required to complete submission of CY 2015 establishment injury/illness data by May 1st .	All agencies required to complete submission of CY 2016 establishment list update by May 1st .	
June			
July			
August			
September			
October			All agencies with integrated ECOMP/OSHA-reporting functions should submit CY 2017 establishment lists by October 15th .
November			
December			
2017			
January		OSHA will email reporting materials, and BLS will activate reporting portal on January 15th .	
February		OSHA - Bi-weekly status/process updates	
March		OSHA - Bi-weekly status/process updates	
April		OSHA - Bi-weekly status/process updates	
May		All agencies required to complete submission of CY 2016 establishment injury/illness data by May 1st .	All agencies required to complete submission of CY 2017 establishment list update by May 1st .
June			
July			
August			
September			
October			All agencies with integrated ECOMP/OSHA-reporting functions should submit CY 2018 establishment lists by October 15th .
November			
December			
2018			
January			OSHA will email reporting materials, and BLS will activate reporting portal on January 15th .
February			OSHA - Bi-weekly status/process updates
March			OSHA - Bi-weekly status/process updates
April			OSHA - Bi-weekly status/process updates
May			All agencies required to complete submission of CY 2017 establishment injury/illness data by May 1st .