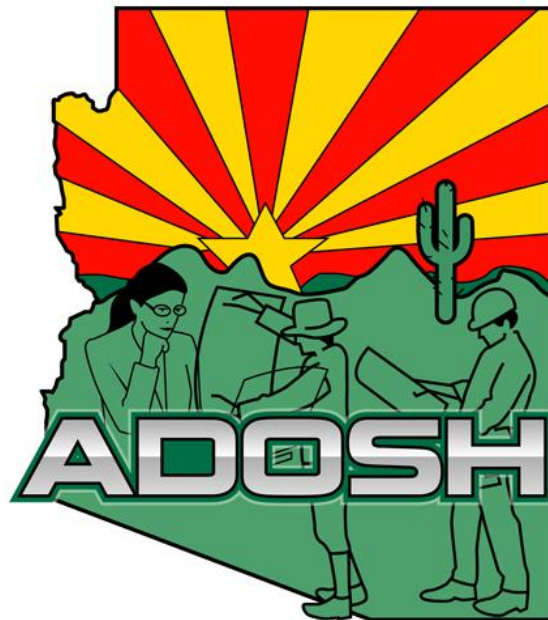


THE INDUSTRIAL COMMISSION OF ARIZONA DIVISION OF OCCUPATIONAL SAFETY AND HEALTH

Fiscal Year 2011 Annual Report – 23g Grant

October 1, 2010 through September 30, 2011



Protection of life, health, safety and
welfare of Arizona's most valuable assets.

ADOSH

Quarterly and Annual Report

Executive Summary

The ADOSH 23g grant-related functions consist of the following activities: Compliance inspections, discrimination investigations, training classes, adoption of standards and plan changes, and activities associated with the Voluntary Protection Program (VPP).

ADOSH conducted 913 inspections during FY 2011, a 15.9% decrease from the 1085 inspections in FY 2010, and significantly fewer than the 1400 inspections originally projected for the year. (This was mainly due to decreased staffing levels. For much of the fiscal year, ADOSH compliance staffing levels were at approximately 65%). There were 20 accident inspections, a 32.5% decrease from the 32 inspections conducted in FY 2010, as well as 278 complaint inspections, 13% fewer than the 320 complaint inspections conducted in FY 2010.

During fiscal year 2011, the bulk of ADOSH resources were concentrated in the construction industry, which continues to be the major industry with the most serious hazards and employee exposures.

ADOSH has jurisdiction to investigate situations where an employee believes he has suffered adverse action due to engaging in activity protected by the ADOSH Act (usually, filing a complaint regarding workplace safety with ADOSH or with the employer). ADOSH conducted 78 discrimination investigations during FY 2011, a 14.3% decrease from the 91 investigations in FY 2010.

ADOSH had mixed results with respect to the various performance goals. We were able to meet some activities projected for various goals, but not others, again due to staffing levels. One area of note is our goal to increase membership in the VPP program. Since the inception of this goal in 2007, ADOSH has welcomed 17 employers into this program, three shy of our goal of 20. We anticipate reaching that goal in FY 2012.

ADOSH

Quarterly and Annual Report

ALL COMPLIANCE SECTIONS

CATEGORY	First Quarter	Second Quarter	Third Quarter	Fourth Quarter	Yearly Totals	Percent
Accident	3	4	6	7	20	2.19
Complaint	66	76	59	77	278	30.45
Planned	106	138	99	149	492	53.89
Prog. Related	0	0	1	7	8	0.88
Follow-up	4	4	2	1	11	1.2
Referrals	7	9	8	3	27	2.96
Unprog. Related	11	6	31	29	77	8.43
Monitoring	0	0	0	0	0	0
Total	197	237	206	273	913	

SIC	INDUSTRY	First Quarter	Second Quarter	Third Quarter	Fourth Quarter	Yearly Totals	Percent of Total	Yearly Goal	Percent of Yearly Goal
0100-0999	Agriculture	4	5	4	12	25	2.74	52	48.08
1500-1799	Construction	95	132	101	146	474	51.92	730	64.93
2000-3999	Manufacturing	49	31	45	51	176	19.28	283	62.19
4000-8999	Services	45	67	55	62	229	25.08	283	80.92
9100-9799	Public Admin.	4	2	1	2	9	0.99	52	17.31
Total		197	237	206	273	913		1400	65.21

	First Quarter	Second Quarter	Third Quarter	Fourth Quarter	Yearly Totals
Discrimination					
Complaints received	20	16	23	19	78

EMPHASIS PROGRAM	First Quarter	Second Quarter	Third Quarter	Fourth Quarter	Yearly Totals
FALL	8	16	28	25	77
TRENCH	3	8	5	7	23
SILICA	1	1	2	3	7
HIEMOD	0	0	23	14	37

Compliance position vacancies, by quarter and discipline

	First Quarter	Second Quarter	Third Quarter	Fourth Quarter
Safety	7	8	8	5
Health	3	2	2	2

ADOSH

Quarterly and Annual Report

TRAINING

	First	Second	Third	Fourth	Yearly	Yearly	Percent of
OVERALL TRAINING STATISTICS	Quarter	Quarter	Quarter	Quarter	Totals	Goals	Yearly Goal
Training Courses/Speeches Presented	23	44	67	54	188	325	57.85
Employer Participants Trained	186	391	564	354	1495	2500	59.8
Employer Participant - Hours	890	1343	1492	895	4620		
Employee Participants Trained	257	579	939	913	2688	6500	41.35
Employee Participant - Hours	995	2401	3761	1458	8615		
Hours of training conducted	102	184	232	153	671		
Average mgmt per class	8.09	8.89	8.42	6.56	7.99		
Average employees per class	11.17	13.16	14.01	16.91	13.81		
Average class length (hours)	4.43	4.18	3.46	2.83	3.73		
Employers in attendance by SIC							
0100 - 0999 Agriculture	2	4	1	0	7		
1000 - 1499 Mining	0	0	0	0	0		
1500 - 1799 Construction	15	12	32	30	89	70	127.14
2000 - 3999 Manufacturing	24	7	29	4	64	40	160
4000 - 4999 Transportation	1	3	6	4	14		
5000 - 5999 Wholesale/Retail Trade	5	0	7	2	14		
6000 - 6799 Fin/Ins/Real Estate	7	6	6	9	28		
7000 - 8999 Services	50	29	46	32	157		
9100 - 9799 Government	8	9	14	12	43		
9999 N.C./ Various Employers	0	0	13	20	33		
Total	112	70	154	113	449		
Average courses per trainer per week	0.88	1.69	2.58	2.08			

ADOSH Quarterly and Annual Report

SAFETY COMPLIANCE INSPECTIONS

Phoenix Section A

CATEGORY	First Quarter	Second Quarter	Third Quarter	Fourth Quarter	Yearly Totals	Percent
Accident	1	0	1	1	3	1.7
Complaint	15	13	12	11	51	28.98
Planned	43	8	13	20	84	47.73
Prog. Related	0	0	0	5	5	2.84
Follow-up	2	0	0	1	3	1.7
Referrals	0	0	0	0	0	0
Unprog. Related	7	3	14	6	30	17.05
Monitoring	0	0	0	0	0	0
Total	68	24	40	44	176	
Avg. per CO/wk	1.74	0.92	1.54	1.69		

SIC	INDUSTRY	First Quarter	Second Quarter	Third Quarter	Fourth Quarter	Yearly Totals	Percent of total	Yearly Goals	Percent of Yearly Goal
0100-0999	Agriculture	0	0	0	4	4	2.27	9	44.44
1500-1799	Construction	46	16	20	25	107	60.8	210	50.95
2000-3999	Manufacturing	10	2	9	7	28	15.91	36	77.78
4000-8999	Services	11	6	11	8	36	20.45	36	100
9100-9799	Public Admin.	1	0	0		1	0.57	9	11.11
Total		68	24	40	44	176		300	58.67
Discrimination Investigations Opened		4	5	3	4	16			

ADOSH

Quarterly and Annual Report

Phoenix Section B

CATEGORY	First Quarter	Second Quarter	Third Quarter	Fourth Quarter	Yearly Totals	Percent
Accident	0	0	2	1	3	1.35
Complaint	3	3	5	6	17	7.66
Planned	22	54	38	80	194	87.39
Prog. Related	0	0	0	0	0	0
Follow-up	0	0	2	0	2	0.9
Referrals	0	0	1	0	1	0.45
Unprog. Related	0	0	3	2	5	2.25
Monitoring	0	0	0	0	0	0
Total	25	57	51	89	222	
Avg. per CO/wk	0.96	2.19	0.98	1.71		

SIC	INDUSTRY	First Quarter	Second Quarter	Third Quarter	Fourth Quarter	Yearly Totals	Percent of total	Yearly Goals	Percent of Yearly Goal
0100-0999	Agriculture	0	1	0	2	3	1.35	9	33.33
1500-1799	Construction	23	56	40	74	193	86.94	210	91.9
2000-3999	Manufacturing	2	0	5	6	13	5.86	36	36.11
4000-8999	Services	0	0	5	6	11	4.95	36	30.56
9100-9799	Public Admin.	0	0	1	1	2	0.9	9	22.22
Total		25	57	51	89	222		300	74
Discrimination									
Investigations Opened		0	0	0	0	0			

ADOSH

Quarterly and Annual Report

Tucson

CATEGORY	First Quarter	Second Quarter	Third Quarter	Fourth Quarter	Yearly Totals	Percent
Accident	1	1	2	2	6	3.14
Complaint	12	7	11	21	51	26.7
Planned	15	52	20	14	101	52.88
Prog. Related	0	0	0	0	0	0
Follow-up	0	1	0	0	1	0.52
Referrals	3	4	0	0	7	3.66
Unprog. Related	1	1	7	16	25	13.09
Monitoring	0	0	0	0	0	0
Total	32	66	40	53	191	
Avg. per CO/wk	0.82	1.69	1.03	1.36		

SIC	INDUSTRY	First Quarter	Second Quarter	Third Quarter	Fourth Quarter	Yearly Totals	Percent of total	Yearly Goals	Percent of Yearly Goal
0100-0999	Agriculture	2	2	1	2	7	3.66	9	77.78
1500-1799	Construction	15	52	25	32	124	64.92	210	59.05
2000-3999	Manufacturing	8	2	4	5	19	9.95	36	52.78
4000-8999	Services	7	10	0	14	31	16.23	36	86.11
9100-9799	Public Admin.	0	0	10	0	10	5.24	9	111.11
Total		32	66	40	53	191		300	63.67
Discrimination Investigations Opened		1	0	3	2	6			

ADOSH Quarterly and Annual Report

HEALTH COMPLIANCE INSPECTIONS

Phoenix

CATEGORY	First Quarter	Second Quarter	Third Quarter	Fourth Quarter	Yearly Totals	Percent
Accident	1	3	1	3	8	2.96
Complaint	33	43	27	32	135	50
Planned	21	19	26	29	95	35.19
Prog. Related	0	0	0	2	2	0.74
Follow-up	2	3	2	0	7	2.59
Referrals	1	1	4	3	9	3.33
Unprog. Related	3	2	7	2	14	5.19
Monitoring	0	0	0	0	0	0
Total	61	71	67	71	270	
Avg. per CO/wk	0.67	0.91	0.86	0.91		

SIC	INDUSTRY	First Quarter	Second Quarter	Third Quarter	Fourth Quarter	Yearly Totals	Percent of total	Yearly Goals	Percent of Yearly Goal
0100-0999	Agriculture	0	1	3	4	8	2.96	20	40
1500-1799	Construction	12	7	12	13	44	16.3	80	55
2000-3999	Manufacturing	21	21	22	29	93	34.44	140	66.43
4000-8999	Services	26	41	29	25	121	44.81	140	86.43
9100-9799	Public Admin.	2	1	1	0	4	1.48	20	20
Total		61	71	67	71	270		400	67.5
Discrimination									
Investigations Opened		9	7	11	10	37			

ADOSH

Quarterly and Annual Report

Tucson

CATEGORY	First Quarter	Second Quarter	Third Quarter	Fourth Quarter	Yearly Totals	Percent
Accident	0	0	0	0	0	0
Complaint	3	10	4	7	24	44.44
Planned	5	5	2	6	18	33.33
Prog. Related	0	0	1	0	1	1.85
Follow-up	0	0	0	0	0	0
Referrals	3	4	1	0	8	14.81
Unprog. Related	0	0	0	3	3	5.56
Monitoring	0	0	0	0	0	0
Total	11	19	8	16	54	
Avg. per CO/wk	0.85	1.46	0.62	1.23		

SIC	INDUSTRY	First Quarter	Second Quarter	Third Quarter	Fourth Quarter	Yearly Totals	Percent of total	Yearly Goals	Percent of Yearly Goal
0100-0999	Agriculture	1	1	0	0	2	3.7	5	40
1500-1799	Construction	0	1	3	2	6	11.11	20	30
2000-3999	Manufacturing	8	6	5	4	23	42.59	35	65.71
4000-8999	Services	1	10	0	9	20	37.04	35	57.14
9100-9799	Public Admin.	1	1	0	1	3	5.56	5	60
Total		11	19	8	16	54		100	54
Discrimination Investigations Opened		6	4	6	3	19			

ADOSH

Quarterly and Annual Report

STANDARDS/PLAN CHANGES

The Arizona Division of Occupational Safety & Health took the action indicated regarding the following state plan changes during the year:

First Quarter:

- CPL 02-00-149: Severe Violator Enforcement Program (SVEP) adopted 10-21-2010
- CPL 02-10-07: Injury and Illness Recordkeeping NEP adopted 11-16-2010

Second Quarter:

- Changes to acetylene standards (1910.102) adopted 1-12-2011

Third Quarter:

- CPL 02-01-050: Enforcement Guidelines for Personnel Protective Equipment (PPE) adopted 5/15/11
- CPL 03-11-01: Microwave Popcorn Processing Plants – National Emphasis Program (NEP) adopted 5/15/2011
- STD 03-11-002: Compliance Guidance for Residential Construction adopted 6/16/2011
- Standard adoption: 29 CFR 1910 & 1926 Hexavalent Chromium – Employee Notification of Test Results adopted 6/13/2011
- Standard adoption: 29 CFR 1926 Steel Erection – non mandatory regulation changes adopted 6/13/2011
- Standard adoption: 29 CFR 1926 CC 1400 Cranes and Derricks adopted 6/13/2011

Fourth Quarter:

- CPL 03-00-013 Primary Metals Industries National Emphasis Program (NEP) adopted 7/5/2011
- CPL 02-00-151 29 CFR 1910 Subpart T- Commercial Diving Operations Guidance adopted 8/8/2011

ADOSH Quarterly and Annual Report

GOAL 1.1

5-Year Performance Goal:

Reduce the injury and illness rate by 10% in the framing construction industry.(SIC 1751)

Annual Performance Goal:

Reduce the injury and illness rate by 2% in the framing construction industry.

BASELINE: *BLS calendar year 2006 Total Arizona Case Rate for framing construction = N/A*

2007 rate = 13.3
2008 rate = 11.1
2009 rate = 8.9
2010 rate = 9.2

GOAL ACTIVITY:

This goal focuses on injuries and illnesses within the framing construction industry. This industry has historically seen high injury rates, as is typical in construction. Since 2007, the overall industry case rate in Arizona has dropped by 30.8 percent

For FY 2011, ADOSH’s goal was to conduct 20 inspections in this industry, with at least 50 hazards identified. Five training classes were also projected. ADOSH conducted 20 inspections and identified 52 hazards. With respect to training, we had a total of 89 companies from the construction industry in various classes.

While the overall case rate climbed slightly from 2009 to 2010, as mentioned above, the rate is still significantly below where it was when ADOSH first stated focusing resources in this industry.

The following table shows the FY 2011 industry activity for this goal.

	First Quarter	Second Quarter	Third Quarter	Fourth Quarter	Yearly Totals
Compliance Inspections	5	1	5	9	20
Hazards identified	15	0	15	22	52
% insp. w/ hazards	100	0	80	66.7	
Const'n companies attending classes	15	12	32	30	89

ADOSH

Quarterly and Annual Report

GOAL 1.2

5-Year Performance Goal:

Reduce by 10% the injury and illness rate in the structural steel and precast concrete industry.(SIC 1791)

Annual Performance Goal:

Reduce by 2% the injury and illness rate in the structural steel and precast concrete industry.

Baseline: BLS calendar year 2006 Total Arizona Case Rate for the structural steel and precast concrete industry = 15.0

- 2007 rate = 9.3**
- 2008 rate = 11.0**
- 2009 rate = 11.6**
- 2010 rate = 11.8**

GOAL ACTIVITY:

This goal focuses on injuries and illnesses within the structural steel and precast concrete construction industry. This industry has historically seen high injury rates, as is typical in construction. From 2006 to 2007, the overall industry case rate in Arizona has dropped by 21%. Unfortunately, since 2007, the rate has increased by 26.8%.

For FY 2011, ADOSH's goal was to conduct 10 inspections in this industry, with at least 30 hazards identified. Five training classes were also projected. ADOSH conducted 26 inspections and identified 56 hazards. With respect to training, we had a total of 89 companies from the construction industry in various classes.

The following table shows the FY 2011 industry activity for this goal.

	First Quarter	Second Quarter	Third Quarter	Fourth Quarter	Yearly Totals
Compliance Inspections	3	8	4	11	26
Hazards identified	8	21	11	16	56
% insp. w/ hazards	67	75	100	36.4	
Const'n companies attending classes	15	12	32	30	89

ADOSH

Quarterly and Annual Report

GOAL 1.3

5-Year Performance Goal:

Reduce by 10% the injury and illness rate in the wood products manufacturing industry, NAICS 321 .(SIC 2441-2449, 2493-2499, and 2511- 2512)

Annual Performance Goal:

Reduce by 2% the injury and illness rate in the wood products manufacturing industry..

Baseline: BLS calendar year 2006 Total Arizona Case Rate for the wood products mfg industry = 9.2

2007 rate = 9.4
2008 rate = 7.2
2009 rate = 7.4
2010 rate = 7.0

GOAL ACTIVITY:

This goal focuses on injuries and illnesses within the wood products manufacturing industry. This industry has historically seen one of the higher injury rates in manufacturing. Since 2006, the overall industry case rate in Arizona has dropped by 23.9 percent.

For FY 2011, ADOSH's goal was to conduct 10 inspections in this industry, with at least 50 hazards identified. Five training classes were also projected. ADOSH conducted 12 inspections and identified 127 hazards. With respect to training, we had a total of 7 companies from this industry in various classes. ADOSH met this goal.

The following table shows the FY 2011 industry activity for this goal.

	First Quarter	Second Quarter	Third Quarter	Fourth Quarter	Yearly Totals
Compliance Inspections	4	2	2	4	12
Hazards identified	54	8	7	58	127
% insp. w/ hazards	50	100	50	75	
Companies attending classes	3	0	2	2	7

ADOSH

Quarterly and Annual Report

Goal 1.4

5-Year Performance Goal:

Reduce by 10% the injury and illness rate in the architectural and structural metals manufacturing industry, NAICS 3323. (SIC 3441-3449)

Annual Performance Goal:

Reduce by 2% the injury and illness rate in the architectural and structural metals manufacturing industry.

Baseline: BLS calendar year 2006 Total Arizona Case Rate for the architectural and structural metals manufacturing industry = 8.0

2007 rate = 8.7

2008 rate = 9.0

2009 rate = 3.2

(Note: BLS did not record a rate specific to this industry in 2009. The rate for the parent industry (Fabricated Metal Products) was recorded and is used here. The 2008 rate for Fabricated Metal Products was 5.8.)

2010 rate = 6.8

GOAL ACTIVITY:

This goal focuses on injuries and illnesses within the architectural and structural metals manufacturing industry. This industry has historically seen one of the higher injury rates in manufacturing. Since 2006, the overall industry case rate in Arizona has dropped by 15 percent.

For FY 2011, ADOSH's goal was to conduct 50 inspections in this industry, with at least 200 hazards identified. 20 training classes were also projected. ADOSH conducted 10 inspections and identified 98 hazards. With respect to training, we had a total of five companies from the industry in various classes.

Due to staffing resources, ADOSH was unable to achieve the activity level goals with respect to this industry. However, the overall case rate is still on a downward trend.

The following table shows the FY 2011 industry activity for this goal.

	First Quarter	Second Quarter	Third Quarter	Fourth Quarter	Yearly Totals
Compliance Inspections	3	5	1	1	10
Hazards identified	46	28	15	9	98
% insp. w/ hazards	66.7	80	100	100	
Companies attending classes	5	0	0	0	5

ADOSH

Quarterly and Annual Report

GOAL 1.7

5-Year Performance Goal:

Approve at least 20 new workplaces for inclusion in the Arizona Voluntary Protection Program (VPP).

Annual Performance Goal:

Approve at least 4 new workplaces for inclusion in the VPP.

Baseline: *Number of workplaces with VPP status as of 9/30/07 = 19*

Number of workplaces approved in FY 2008 = 5

Number of workplaces approved in FY 2009 = 4

Number of workplaces approved in FY 2010 = 6

Number of workplaces approved in FY 2011 = 2

Number of workplaces approved in FY 2012 =

The ADOSH VPP program remains strong. Since the inception of this goal, ADOSH has approved 17 workplaces into this program. Although ADOSH did not meet its annual performance goal (approving only two of the four workplaces projected), we are well on track to meeting the broader, five-year performance goal of 20 new workplaces.

	First Quarter	Second Quarter	Third Quarter	Fourth Quarter	Yearly Totals
Number of conferences conducted	0	2	1	0	3
Number of applications/brochures dist.	2	12	5	3	22
Number of applications received:	0	0	2	3	5
Number of site evaluations conducted	0	1	0	1	2
Number of workplaces approved:	0	1	1	0	2
Number of re-certification visits	3	2	3	3	11
Number of re-certifications approved	3	2	3	3	11

Companies approved during FY 2011:

Raytheon Missile Systems, Air Warfare Systems, Tucson	1/20/2011
Hunter Douglas, Inc – Horizontal Blinds, Gilbert	4/28/2011

ADOSH

Quarterly and Annual Report

Goal 2.1

5-Year Performance Goal:

Obtain first-level decision in 90% of discrimination investigations within 90 calendar days of receipt.

Annual Performance Goal:

Obtain first-level decision in 80% of discrimination investigations within 90 calendar days of receipt.

Baseline: *During FY 07 first-level decision was made within 90 calendar days of receipt in 56 % of all cases.*

FY 2008 = 42.7
FY 2009 = 56.63
FY 2010 = 71.43

	First Quarter	Second Quarter	Third Quarter	Fourth Quarter	Yearly Totals
Number of complaints received	20	16	23	19	78
Complaints completed w/in qtr.*	13	19	13	26	71
No. completed w/in 90 days	6	17	10	18	51
% completed w/in 90 days	46.2	89.5	76.9	69.2	71.83
Cases pursued/settled	1	2	1	4	8
Percent pursued/settled	7.69	10.53	7.69	15.38	11.27

*Complaints completed within the quarter may include complaints received in prior quarters/years.

ADOSH

Quarterly and Annual Report

GOAL 2.2

5-Year Performance Goal:

Reduce citation lapse times by 25%.

Annual Performance Goal:

Reduce citation lapse times by 5%.

Baseline: Fiscal year 2007 average citation lapse times = Safety = 56.34, Health = 43.29.

Safety

FY 2008: 60.08 Days

FY 2009: 58.81 Days

FY 2010: 57.34 Days

FY 2011: 60.74 Days

Health

34.62 Days

30.83 Days

35.85 Days

35.68 Days

	First Quarter	Second Quarter	Third Quarter	Fourth Quarter	Yearly Average
Avg. citation lapse time (safety)	64.64	57.19	63.07	60.2	60.74
Percent change from previous qtr.		-11.5		-4.4	
Avg. citation lapse time (health)	35.73	36.04	33.81	36.09	35.68
Percent change from previous qtr.		0.8		6.4	

ADOSH

Quarterly and Annual Report

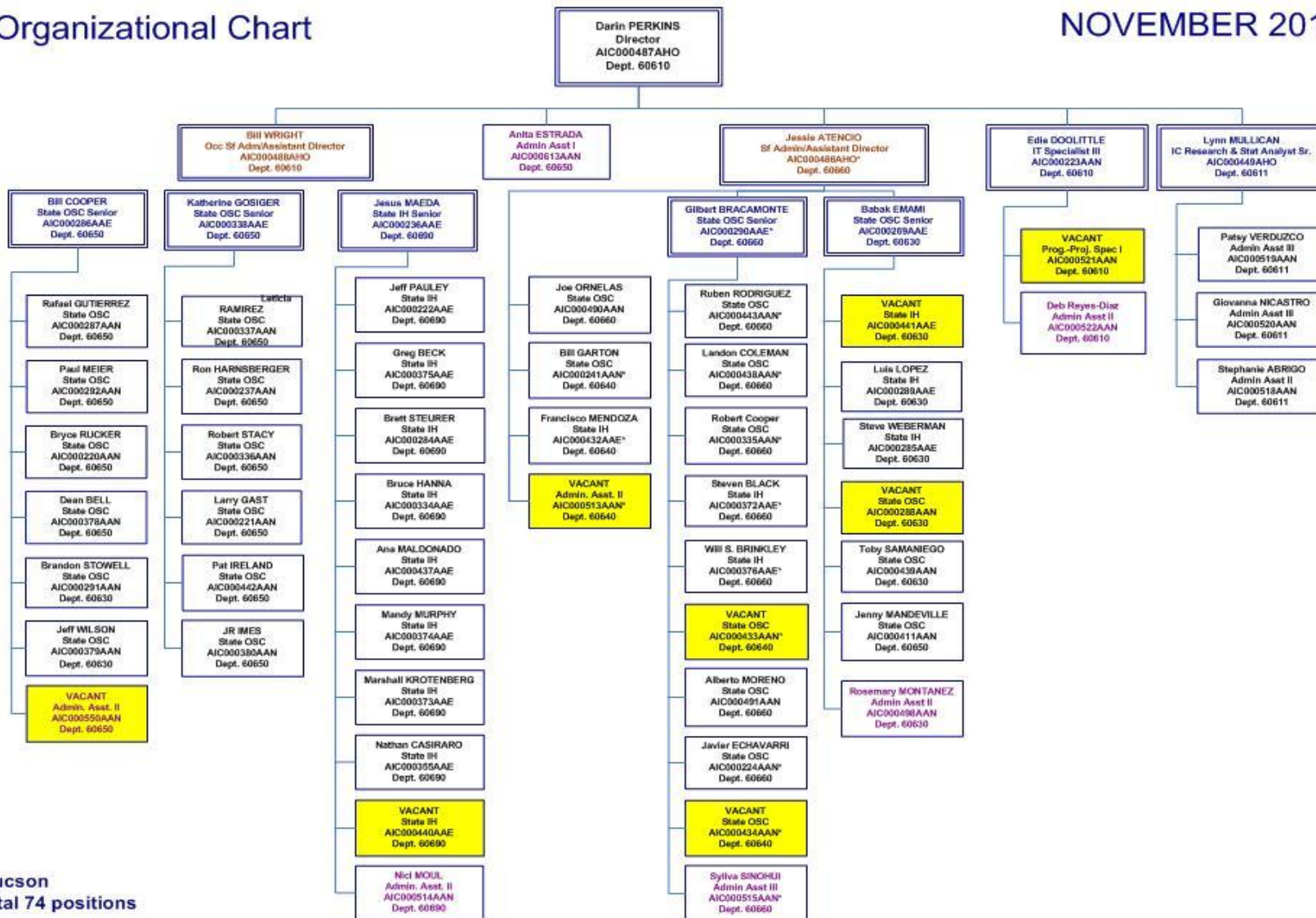
The Industrial Commission of Arizona

Division of Occupational Safety and Health

Bureau of Labor & Statistics

Organizational Chart

NOVEMBER 2011



*Tucson
Total 74 positions